

Quick Start

Digital Satellite Receiver

- Support of SD (MPEG2), DVB-C system
- Slot for Smart Card
- Standard resolution video output – SCART, CVBS
- Low power consumption in Stand-by mode, below 1W
- Automatic Stand-By
- Electronic Program Guide - EPG
- Multilingual Menu, including English
- Video Games

Remote controller



Button	Function
POWER -	Switch your receiver on from standby mode.
HOME	Optional function
MUTE -	Enable or disable the audio.
Numeric buttons	Select channel or enter programming parameters.
FAV	Set receiver to the favourite list mode, display actual favourite channel list.
LAST -	Switch to the previous channel.
MENU	Display the Main Menu on the screen, or return to the previous menu or status.
INFO	Display information bar of current service.
EPG	Display the Electronic Program Guide on screen.
EXIT	Cancel the user selection and return to the viewing mode from a menu.
	Adjust volume level or move cursor left or right in the menu.
	Change channel or move cursor up or down in the menu.
OK	Display channel list on screen. Select an item in menu.
TV/R	Switch receiver between TV and Radio mode.
FIND	Enables to find channel by name entered by numeric buttons.
P+ , P-	Move cursor next / previous page
CARD	Smart Card activation manager. (Optional)
MAILBOX	Smart Card mailbox manager. (Optional)
MODE	Video mode setup.
STATUS	Show receiver's status window.
AUDIO	Audio channels setup.
TEXT	Show teletext information of the current channel.
SUB-T	Subtitle setup.
A, B, C, D	Optional buttons (according function descriptions on screen)
WHITE, YELLOW, BLACK, RED, GREEN, BLUE	Colour buttons. (according function descriptions on screen)

Basic connection



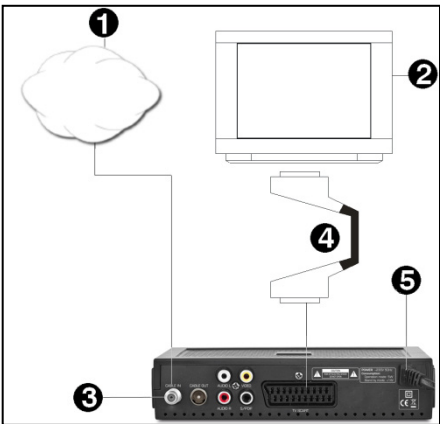
After purchasing receiver, unpack it and check to make sure that all of the following items are included in the packaging:

- Receiver
- Remote controller
- Quick Start manual
- Batteries - 2x AAA (optional)

To install the batteries in the remote control, remove the flap protecting the battery compartment if inside the chamber there are used batteries, they must be removed. Then put new batteries inside. When installing the battery, pay special attention on the polarity - the direction of insertion of both batteries. The correct polarity of batteries is drawn on a description inside the battery compartment in the remote control. After installing the batteries, place protecting flap on its original position.

Next, connect cable from operator socket (1 on picture) to receiver's (3) CABLE IN connector. Using SCART cable (4) connect receiver with TV Set (2). Finally, at the end connect main cord (5) to main socket.

Turn on the TV Set. After while on TV Set screen You should see receiver's OSD. If TV Set not display receiver's OSD, probably signal source is set wrong in TV. Check TV Set documentation for information how to change signal source.



Operating notes

Automatic Power Down

In accordance with actual European Union requirements, Your receiver is equipped with function "Automatic Power Off". It works by switching the receiver into standby mode after a period of 3 hours after the last active use. In practice this means that if during this time the receiver will not be given any command by using the remote control or keypad on the front panel, the receiver turns off. Turning off the receiver will be preceded (2 minutes previous) by a relevant message appears on the TV screen. Please also note that this feature is enabled by default, but at Your own request, You can disable it using the appropriate functions in the receiver menu.

Troubleshooting

Look through the trouble shooting information. Some simple checks or minor adjustment of the unit on your part may help resolve the problems. If the problems prove to be beyond your capability, you had better hand it over to a professional qualified technician.

Troubles	Possible Causes	Suggested Solutions
No power	The power cord has not been well connected	Plug the power cord into the outlet tightly and turn on the power; if no power still, turn off the power again, and turn it on in 5-10 minutes.
Receiver cannot play scrambled channels	Smart card is not inserted, or is not inserted correctly into card reader slot	Insert smart card, according to description on right side of receiver.
	Smart card is not activated	Use CARD button to enter to Smart Card activation manager and go follow instructions displayed on screen.
Cannot scan programs	Parameter input incorrectly	Input Frequency, SR, QAM parameter correctly
No picture	Output cord connect incorrectly	Connect the output cord correctly
	The video output mode of the unit is different from the mode of monitor	Reset the working mode
No color	Output cord connect incorrectly	Connect the output cord correctly
	The video output system of the unit is different from the mode of monitor	Reset the working system
The remote control fails to work	Batteries incorrectly installed	Install the battery correctly
	Batteries exhausted	Replace the battery
	Beyond the effective operation range	Operate within a normal range
	The remote sensor is pointed to by bright light	Place the unit elsewhere for a change
Audio sound and subtitle language are not the chosen items	Has not chosen the right sound channel	Press the Audio button to shift the channel
No sound at all	The unit is in a mute status	Cancel the mute
	Volume set at a too low level	Augment the volume
	Cable connected incorrectly	Connect the cable correctly
No sound by chance	There might be a short circuit	Correct the output-cable connection, and turn on it.
Serious distortion or cannot receive signal normally	Too much interferential signal	Change a signal cable to new one. If it not helps - contact cable operator.

Safety precautions

CAUTION:



Warning: The lightning flash with arrowhead symbol, within an equilateral triangle, is intended to alert the user to "dangerous voltage" and to prevent from a risk of electric shock.



Warning: To reduce the risk of electric shock, don't open the cabinet. Refer servicing to qualified personnel only.



Warning: The exclamation point within an equilateral triangle is intended to alert the user to important operating and maintenance (servicing).

Warning: Do not use this STB where contact with or immersion in water is a possibility. Do not use near flower vase, washbowls, kitchen sinks, laundry tubs, swimming pools, etc.

Warning: Do not put the candle or lamp stand on the cabinet; otherwise, there is the danger of fire.

Warning: The unit should be connected to a power supply only of the type described in the operating instructions or as marked on the unit. If you are not sure of the type of power supply (for example, 120 or 230 V) to your home, consult your local dealer or local power company.

Warning: This product install diodes. Do not open the cabinet or touch any parts in the inner mechanism. Consult your local dealer for technical service if the opening is required.

Note: To ensure proper use of this product, please read this User manual carefully and retain for further reference.

Note: This product install diodes. Do not open the cabinet to avoid the unit direct exposure to radiation.

Unit Cleaning: After the unit power is turned off, you can clean the cabinet, panel and remote control with a soft cloth lightly moistened with a mild detergent solution.

Attachments: Never add any attachments and/or equipment without the manufacturer consent; as such additions may result in the risk of fire, electric shock, or other personal injury.

Locating: Slots and openings in the cabinet are provided for ventilation to protect it from overheating. Do not block these openings or allow them to be blocked by placing the STB on a bed, sofa, or other similar surface, nor should it be placed over a radiator or heat register.

Power-Cord Protection: Place the power-supply cord out of the way, where it will not be walked on. Please take special attentions to cords at plugs, convenience receptacles, and the point where they exit from the unit.

Object and Liquid Entry: Never put objects of any kind into this STB through openings, as they may touch dangerous voltage points or short-out parts that could result in a fire or electric shock. Never spill any liquid on the STB.

Note: Moisture may be formed on the lens when the unit is suddenly moved from a cold environment or an air-condition room to a warm place or immediately after a heater has been turned on or in a steamy or very humid room. If the moisture forms inside the unit, it may not operate properly. To correct this problem, turn on the power and wait about two hours for the moisture to evaporate.

Parts Replacement: When the unit parts need to be replaced, user should make sure the service technician use the replacement parts specified by the manufacturer or having the same characteristics as the original part. Unauthorized replacement may put the unit in the risk of fire, electric shock or other hazards.

Safety Check: After all the maintenances and repairs are done, user is required to request the service technician to conduct the overall safety check to ensure the machine is in the proper condition.

Environment protection



Attention!

Your product is marked with this symbol. It means that used electrical and electronic products should not be mixed with general household waste. There is a separate collection system for these products.

Information on Disposal for Users (private households) in the European Union. Used electrical and electronic equipment must be treated separately and in accordance with legislation that requires proper treatment, recovery and recycling of used electrical and electronic equipment.

Following the implementation by member states, private households within the EU states may return their used electrical and electronic equipment to designated collection facilities free of charge*. In some countries* your local retailer may also take back your old product free of charge if you purchase a similar new one. *) Please contact your local authority for further details.

If you used electrical or electronic equipment has batteries or accumulators, please dispose of these separately beforehand according to local requirements.

By disposing of this product correctly you will help ensure that the waste undergoes the necessary treatment, recovery and recycling and thus prevent potential negative effects on the environment and human health which could otherwise arise due to inappropriate waste handling.

Information on Disposal for Business Users

In the European Union. If the product is used for business purposes and you want to discard it: Please contact your dealer who will inform you about the take-back of the product. You might be charged for the costs arising from take-back and recycling. Small products (and small amounts) might be taken back by your local collection facilities,

In other countries outside the EU. If you wish to discard of this product, please contact your local authorities and ask for the correct method of disposal.

Declaration of conformity

The manufacturer herewith declares the conformity of that product with the following directives and standards:

Low Voltage Directive 2006/95/EC

EN 60065:2002+A1:2006+A11:2008

EMC Directive 2004/108/EC

EN 55 013:2001+A1:2003+A2:2006

EN 55 020:2007

EN 61 000-3-2:2006+A1:2009+A2:2009

EN 61 000-3-3:2008

Model: Digital Cable Receiver DVB-C

Technical specification

Input frequency range:	48-855MHz
RF Input connector:	IEC169-24, Female or IEC169-2, Female
RF Output connector:	IEC169-2, Male
Input impedance:	75Ω
Waveform:	QAM (16, 32, 64, 128, 256)
Video decoding:	MPEG2 (MP@ML)
Video resolution:	PAL 576, NTSC 480
Audio decoding:	MPEG-1, 2 Layer 1 & 2
Audio track:	Stereo, Left, Right
Video/Audio connector:	SCART, CVBS, Audio L/R, Coaxial digital audio
Rated voltage:	~ 230V , 50Hz
Rated consumption:	5 W
Maximum consumption:	9 W
Standby consumption:	< 1 W
Operating temperature:	5-40°C
Operating humidity:	<95%
Net weight:	~0,3 kg
Receiver measurements:	180 mm × 90 mm × 42 mm

Weight and dimensions are not absolutely exact values. Specifications are subject to change (by manufacturer) without notice.